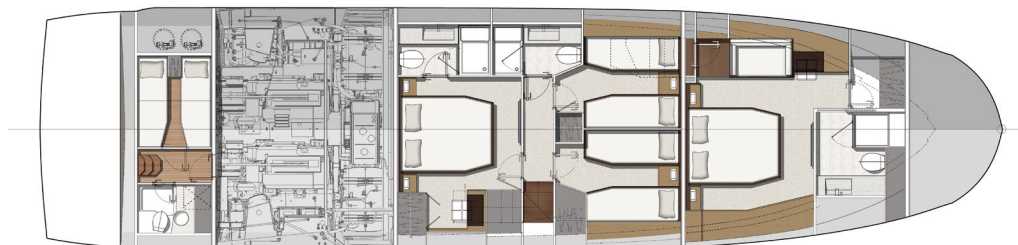
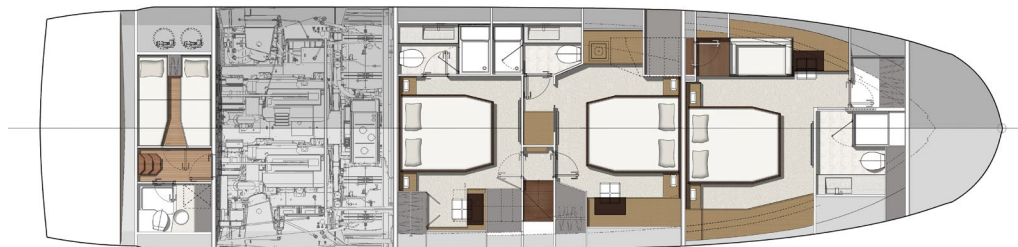
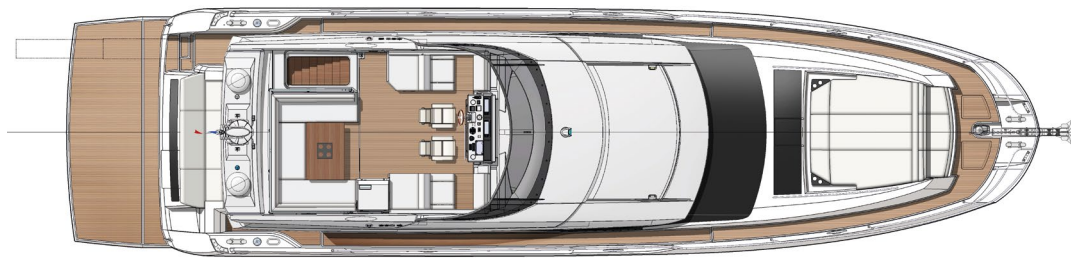




PRESTIGE 680S

Overall length	70'4"	21,45 m
Overall beam	17'4"	5,30 m
Draft	5'2"	1,58 m
Light displacement	67 023 Lbs	30 401 kg
Fuel capacity	911 US gal	3 450 L
Water capacity	201 US gal	760 L
Hot water heater capacity	32 US gal	120 L
Accommodation	8 + 2	
Category	B - 14 / C - 18	
Engine	Volvo 2 x IPS 1200 - D13 - 900 HP Volvo 2 x IPS 1350 - D13 - 1000 HP	



Model available with 3 or 4 staterooms

S-LINE

PRESTIGE 680S

ENGLISH / Standard equipment

Deck

- Stainless steel stem head fitting with anchor roller
- Anchor stop
- Electric windlass with wired remote in anchor locker (24V)
- Windlass controls at lower helm and flybridge
- Anchor locker with dedicated space for fender storage
- Freshwater/saltwater anchor washdown
- Stainless steel cleats (12)
- Stainless steel handrails
- Stainless steel rubrail
- Foredeck sunpad area with cushions
- Foredeck seating area
- Folding canopy over sunpad
- Courtesy LED lights on sidedecks

Bathing platform

- Teak-laid bathing platform
- Hot and cold shower
- Stainless steel bathing ladder

Cockpit

- Relaxed sofa seating / sunpad with fold-up back rest
- Teak cockpit table with cup holders
- Teak-laid cockpit flooring
- Stainless steel ladder to flybridge with teak steps
- Access hatch to the engine room with gas struts
- Transom safety gate
- Lateral door in coaming
- 2 marine stereo speakers
- Overhead LED lighting
- Courtesy LED lighting
- Stern docking winch (port)
- Freshwater/saltwater deck washdown

Sport Fly

- Large, opening electric GPR roof
- Helm console with engine throttles and maneuvering joystick, compass, 12V plug, cup holders and storage compartment
- Helm seats
- Stainless steel guard rails
- Seating area
- Teak table
- Flybridge sunpad with adjustable back rests
- GRP arch with space for antennas and radar
- Radio / MP3 remote control
- 2 marine stereo speakers
- Galley with sink, storage, fridge and electric grill
- Courtesy LED lighting

Interior helm station

- Helm console with engine throttles and maneuvering joystick, full engine instrumentation, compass and cup holders
- Wireless charging station on console
- Twin helm sport seats
- Windscreen wipers with intermittent setting and washers
- Windscreen demister
- USB plugs
- Searchlight with remotes at each helm station
- Horn

Saloon

- U-shaped sofa seating
- Glass coffee table
- Storage cabinet / TV stand to starboard
- Sliding lateral door to starboard
- Side window pleated blinds
- Wooden flooring
- Removable carpet set
- Radio / CD / MP3 with Bluetooth in saloon
- 2 stereo speakers

Galley

- Stainless steel sink
- Mixing tap
- Combination microwave / grill
- 3-zone induction cooktop
- Extractor hood
- Corian worktop
- Fridge dual voltage (198L / 52 US gal)
- Freezer dual voltage (57L / 15 US gal)
- Waste bin
- Storage drawers and cupboards
- Wrap-around galley with cockpit bar
- Wooden flooring

Dining

- Separate dining area with expanding glass-top table
- Wooden flooring

Master Stateroom

- Independent access via private stairway
- Double bed (198 cm x 160 cm / 6'5" x 5'2")
- Innerspring mattress
- 2 reading lamps
- Bedside tables with storage
- Walk-in closet with shelving
- Storage cabinet
- Dressing table with mirror and stool
- Sofa
- Panoramic side windows with blinds and opening ports
- Overhead skylight with opening hatch with electric shade
- Removable carpet set
- AC and USB plugs
- En suite bathroom
- Corian countertops and washbasin
- Separate shower compartment
- Freshwater electric toilets
- Extractor fan
- AC plug
- Opening port

VIP Stateroom

- Double bed (197 cm x 147 cm / 6'5" x 4'9")
- Innerspring mattress
- 2 reading lamps
- Bedside tables
- Large closet with shelving
- Dressing table with mirror and stool
- Large side windows with blinds and opening ports
- Removable carpet set
- AC and USB plugs
- En suite bathroom
- Corian countertops and washbasin
- Separate shower compartment
- Freshwater electric toilets
- Extractor fan
- AC plug
- Opening port

Guest Stateroom

- 2 single berths to port convertible in double berth (195 cm x 69 cm / 6'4" x 2'3")
- 2 single berths to starboard convertible in double berth
- Reading lamp (201 cm x 70 cm / 6'7" x 2'3")
- Bedside table with storage
- Large closet with shelving
- Large side window with opening port
- Removable carpet set
- AC and USB plugs

Crew accomodation - Option

- 2 single berths (196 x 61 cm / 6'5" x 2')
- Storage closet
- Separate bathroom with toilet, washbasin and shower
- Additional holding tank (50L / 13 US Gal)
- Large window on the transom with blinds

- Crew door access from bathing platform
- Direct access to engine room

Propulsion

- Joystick system for IPS
- IPS Nibral twin props
- Electronic power steering
- Electronic engine controls and throttles at each helm
- Single Lever, Cruise Control, Trim Computer and Low Speed functions
- Bow thruster (24V) dual prop (240 kgf/529 lbs.)
- Bronze seawater strainers
- Forced air ventilation system for engine room

Electrical System

- Battery bank (24V) - Engine (120 A/h)
- Battery bank (24V) - House (700 A/h)
- Battery bank crossover switch at helm
- Tactile graphic display for battery levels, AC sources, lighting and tank levels
- Remote battery switches
- Centralized distribution and breaker boxes for AC and DC systems
- AC shore power system
- Twin battery chargers (2 x 60A - 24V)
- Inverter (2000W)
- LED interior and exterior lighting with dimmer switches
- AC plugs in each cabin and in the galley and saloon

Fuel System

- 2 fuel tanks (aluminum) with interconnection valves (3450 L / 911 US gal)
- Fuel fills to port and starboard with crossover valve
- Remote shut-off valves in aft companionway

Water System

- Freshwater tanks (760 L / 201 US gal)
- Hot water heater (120 L / 32 US gal)
- Freshwater pressure pump
- Grey water sump pump with automatic discharge
- Dock water inlet with regulator
- Holding tank (290 L / 77 US gal)
- Overboard discharge pumps for holding tanks with macerator function and deck pump-out
- Automatic bilge pumps (5) with high water alarm
- Manual bilge pump

Systems

- Automatic fire extinguishers in engine room with control at each helm (Novac 1230)

Construction

- Infused GRP hull with longitudinal infused stringers
- Infused GRP deck with counter molding
- Isophthalic gelcoat
- Osmosis barrier
- Infused structural bulkheads

Additional Standard Equipment

- User and Owner's manuals
- Captain's briefcase with set of manuals

North American specifications

- Chilled water air conditioning incorporating reverse cycle heating (81 000 BTU)
- 27.5kW generator with underwater silent exhaust
- AGM Gel batteries bank upgrade
- Galvanic Isolator
- Cathodic bonding system with dedicated anodes