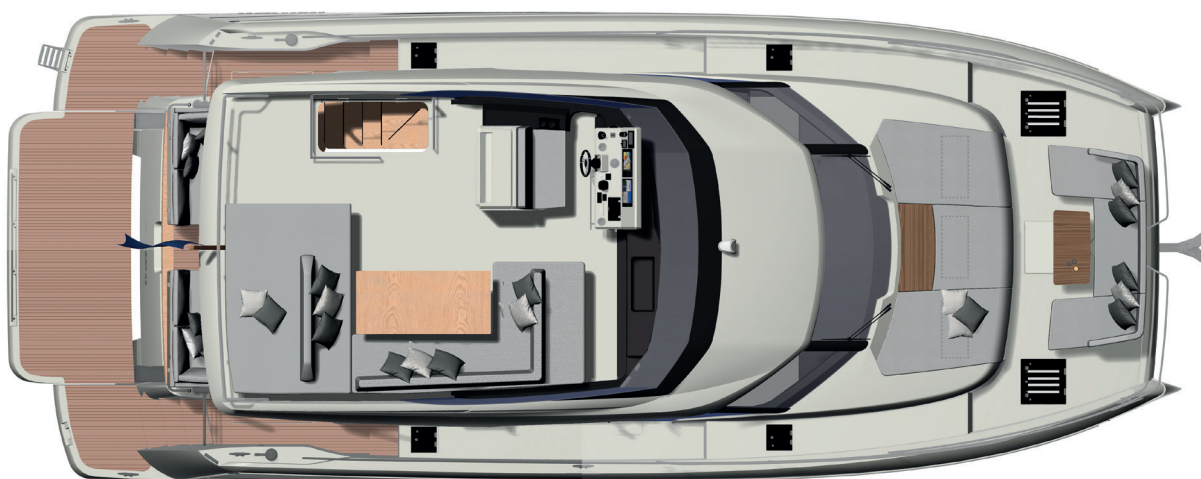


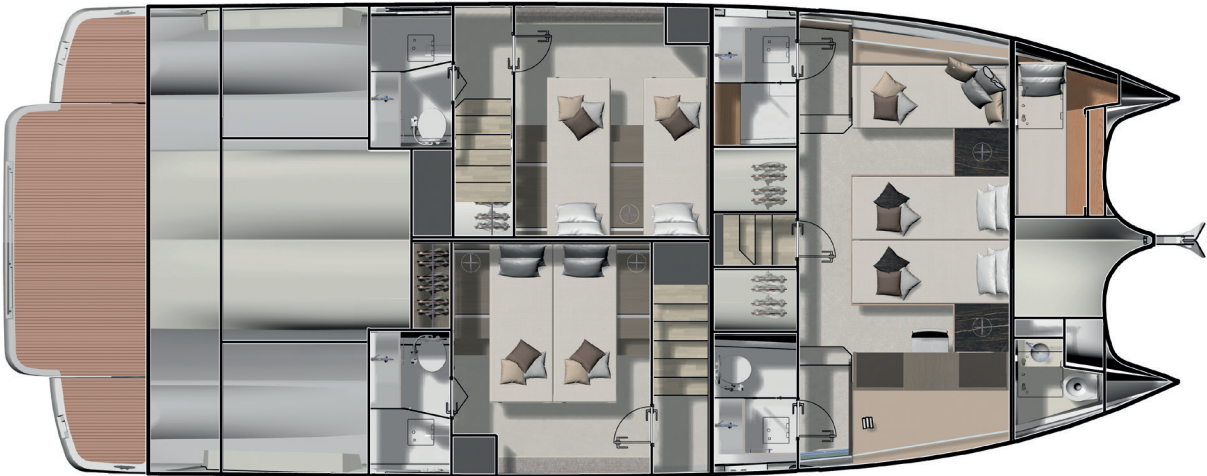
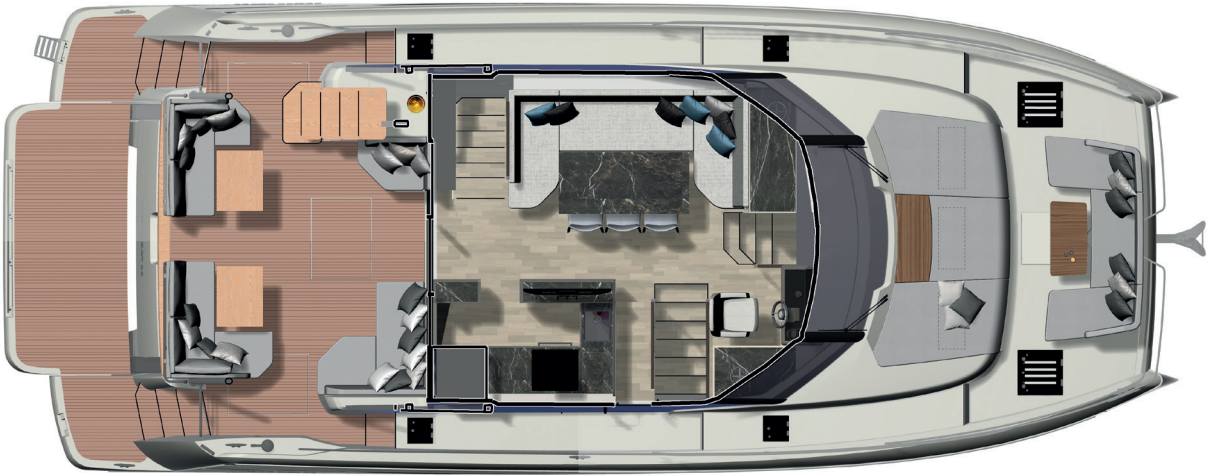
NEW | M48



Overall length / Longueur hors tout	48'6"	14,79 m
Overall beam / Bau maxi	19'7"	6,00 m
Draft / Tirant d'eau	3'6"	1,08 m
Light displacement / Déplacement léger	38 537 Lbs	17 480 kg
Fuel capacity / Capacité carburant	317 US gal	1 200 L
Water capacity / Capacité eau	159 US gal	600 L
Hot water heater capacity / Capacité ballon d'eau chaude	16 US gal	60 L
Accommodation / Couchages	6 / 8 + 1	
Category / Catégorie	B - 12 / C - 14 / D - 16	
Engine	VOLVO 2 x D4-320 HP - V-Drive	
Designers / Architectes	Garroni Design - Philippe Briand - Valentina Militerno De Romedis	

Connected boat technology. Equipped with **searapps**
CONNECT YOUR BOAT FREE YOUR MIND





3 staterooms / 3 bathrooms



4 staterooms / 4 bathrooms

ENGLISH / Preliminary standard equipment

Upholstery

- Exterior upholstery Glacier
- Interior upholstery Dolce white

Interior woodwork

- Walnut interior woodwork

Deck

- Stainless steel stem head fitting with anchor roller
- Anchor stop
- Electric windlass with wired remote in anchor locker (24 V)
- Windlass controls at lower helm and flybridge
- Anchor locker with dedicated space for fender storage
- Stainless steel cleats (8)
- Stainless steel handrails
- Foredeck sunpad area
- Storage compartment with dual access (from cockpit and bathing platform)
- Storage locker located under the cockpit, with electrically controlled access from the swim platform and cover in the aft cockpit
- Courtesy LED lights on sidedecks

Bathing Platform

- Bathing platform
- Hot and cold shower
- Stainless steel bathing ladder

Cockpit

- L-shaped sofa seating for two, with an additional central seat, by RODA
- 2 bench seats in the forward cockpit
- Folding wooden cockpit table with cup holders
- Stainless steel ladder to flybridge with synthetic teak steps
- Access hatch to the engine room with gas struts
- Tansom safety gate
- Lateral door in coaming
- 2 marine stereo speakers
- Overhead LED lighting
- Courtesy LED lighting

Flybridge

- Helm console with engine throttles and maneuvering joystick, compass, 12 V plug, cup holders and storage compartment
- Helm station bench
- Double bench seating at the helm by RODA
- Stainless steel guard rails
- Perspex windscreen
- Modular RODA furniture in the saloon and on the sundeck
- Wooden table
- 2 marine stereo speakers
- Wetbar with sink
- Courtesy LED lighting

Interior helm station - Option (no extra cost)

- Helm console with engine throttles, full engine instrumentation, compass and cup holders
- Upholstered captain's chair
- Windscreen wipers with intermittent setting and washers
- Windscreen demister
- USB plugs
- Horn

Saloon

- U-shaped sofa seating
- Varnished table on stainless steel base
- Storage cabinet / TV stand to starboard
- 2 opening deck hatches in the ceiling
- Sliding lateral door to starboard
- Side window pleated blinds
- Handrails with handstitched Foglizzo leather wrap
- Flooring through maindeck Fortezza
- Radio / CD / MP3 with Bluetooth in saloon
- 2 stereo speakers

Galley

- Stainless steel sink
- Mixing tap with pull-out sprayer
- Combination microwave / grill
- 3-zone induction cooktop
- Compact Volcanic countertop
- Fridge (178L / 47 US Gal) dual voltage
- Freezer (42L / 11 US Gal) dual voltage
- Waste bin
- Storage drawers and cupboards
- Galley island with storage
- Grey lacquer on galley doors
- Flooring through maindeck Fortezza

Master Stateroom

- Independent access via private stairway
- Double bed (200 x 180 cm / 6'6" x 5'10")
- Mattress battens
- 2 reading lamps
- Bedside tables with storage
- Large closet with shelving
- Storage cabinet
- Desk with drawers and pouf
- Sofa
- Panoramic side windows with blinds, sheers and opening ports
- 2 skylights with opening sunshade
- AC and USB plugs
- En suite bathroom
- En-suite toilets with basin
- Corian countertop, resin sink basin
- Soap dispenser & toothbrush holder
- Separate shower compartment
- Freshwater electric toilets
- AC plug
- Opening port
- Opening deck hatch with shade / insect screen

Vip Stateroom

- Double bed (200 x 160 cm / 6'6" x 5'2") convertible into 2 single berths
- 2 reading lamps
- Bedside tables
- Large closet with shelving
- Panoramic side windows with blinds, sheers and opening ports
- Opening deck hatch with shade / insect screen
- AC and USB plugs
- En suite bathroom access via pocket door
- Corian countertop, resin sink basin
- Soap dispenser & toothbrush holder
- Separate shower compartment
- Freshwater electric toilets
- AC plug
- Opening port

Guest stateroom

- 2 single berths (200 x 160 cm / 6'6" x 5'2") convertible in double berth
- Reading lamp
- Bedside table with storage
- Large closet with shelving
- Panoramic side windows with blinds, sheers and opening ports
- AC and USB plugs
- En suite bathroom
- Corian countertop, resin sink basin
- Soap dispenser & toothbrush holder
- Separate shower compartment
- Freshwater electric toilets
- AC plug
- Opening port

Crew accommodation - Option

- Single berth (200 x 72 cm / 6'6" x 2'4")
- Storage closet
- Separate bathroom with toilet, washbasin and shower
- Access via the deck hatches at the bow

Propulsion

- Twin engine V-Drive system
- VOLVO joystick for V-Drive transmission
- Bow thruster 24 V dual prop (250 Kgf / 551 lb)
- Forced air ventilation system for engine room

Electrical system

- Battery bank 12 V - Engine (200 A/h)
- AGM Battery bank 12 V - House (400 A/h)
- Battery bank crossover switch at helm
- Seanapps: connected box + mobile application for monitoring safety, navigation data, maintenance and comfort on board
- Tactile graphic display for battery levels, AC sources, lighting and tank levels
- Remote battery switches
- Centralized distribution and breaker boxes for AC and DC systems
- AC shore power system
- Twin battery chargers 2 x 40A - 24 V
- LED interior and exterior lighting with dimmer switches
- AC plugs in each cabin and in the galley and saloon

Fuel system

- 2 fuel tanks (aluminum) with interconnection valves - 1200 L / 317 US Gal
- Fuel fills to port and starboard

Water system

- Freshwater tanks 600 L / 159 US Gal
- Hot water heater 60 L / 16 US Gal
- Freshwater pressure pump
- Grey water sump pump with automatic discharge
- Holding tank 170 L / 45 US Gal
- Holding tank vent filters
- Overboard discharge pumps for holding tanks with macerator function and deck pump-out
- Automatic bilge pumps (4) with high water alarm

Systems

- Automatic fire extinguishers in engine room with control at each helm (Novac 1230)

Construction

- Hand-laid GRP hull
- Hand-laid GRP deck with counter molding
- Infused GRP hull with longitudinal infused stringers
- Infused GRP deck with counter molding
- Isophthalic gelcoat
- Osmosis barrier
- Infused structural bulkheads

Additional standard equipment

- User and Owner's manuals

North American specifications

- Air conditioning with reverse cycle heating (40 000 BTU)
- Generator with underwater silent exhaust (13,5kW)
- Glendinning cable management system
- AGM Gel batteries bank upgrade
- Galvanic Isolator
- Cathodic bonding system with dedicated anodes
- Fusion Apollo Audio system in salon, cockpit and flybridge
- Fusion Apollo Audio system in owner's cabin
- 50" TV pre wiring in salon with lift
- 32" TV pre wiring in owner's cabin
- Mooring kit
- Side boarding gate on port
- Flybridge Kenyon grill and fridge
- Dock water inlet with regulator
- Fresh water deck wash pump
- Stainless steel fridge in galley
- Safe in owner's cabin