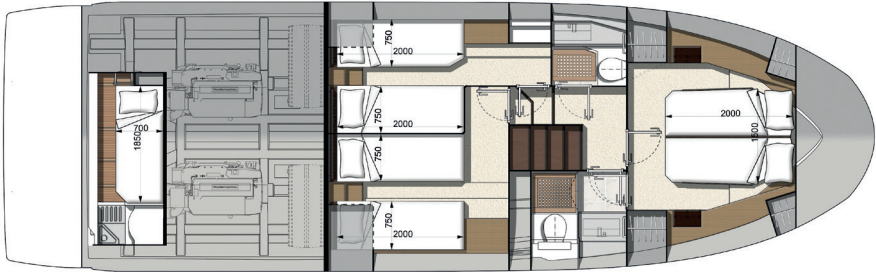
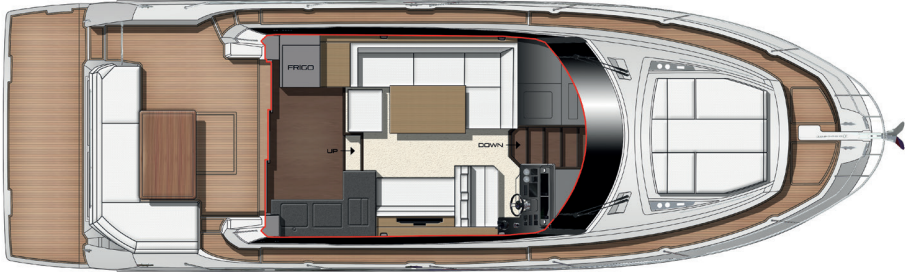
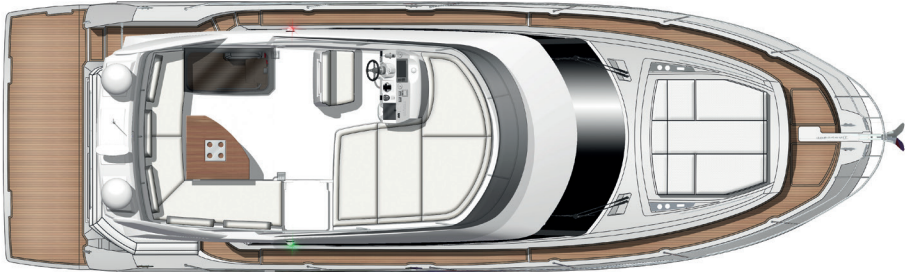


PRESTIGE 460



Overall length / Longueur hors tout	46'10"	14,29 m
Overall beam / Bau maxi	14'1"	4,30 m
Draft / Tirant d'eau	3'5"	1,05 m
Light displacement / Déplacement léger	27 780 Lbs	12 601 kg
Fuel capacity / Capacité carburant	328 US gal	1 240L
Water capacity / Capacité eau	155 US gal	586L
Hot water heater capacity / Capacité ballon d'eau chaude	11 US gal	40L
Accommodation / Couchages	6 + 1	
Category / Catégorie	B - 10 / C - 12	
Engine / Motorisation	Volvo 2 x IPS 500 - D6 - 380 HP / CV Volvo 2 x IPS 600 - D6 - 440 HP / CV	



Model available with 2 or 3 staterooms

ENGLISH / Standard equipment

Upholstery

- Selleries exterieures Glacier
- Selleries intérieures Martin Weiss

Woodwork

- Interior woodwork Grey Oak

Deck

- Stainless steel stem head fitting with anchor roller
- Anchor stop
- Electric windlass with wired remote in anchor locker (12V)
- Anchor locker with dedicated space for fender storage
- Stainless steel cleats (6)
- Stainless steel handrails
- Stainless steel rubrail
- Foredeck sunpad area

Bathing platform

- Teak-laid bathing platform
- Hot and cold shower
- Stainless steel bathing ladder

Cockpit

- Stainless steel ladder to flybridge with synthetic teak steps
- L-shaped seating area
- Teak-laid cockpit flooring
- Access hatch to the engine room with gas struts
- Transom safety gate
- 2 marine stereo speakers
- Overhead LED lighting

Flybridge

- Helm console with engine throttles and maneuvering joystick, compass, (12V) plug and storage compartment
- Helm station bench
- Stainless steel guard rails
- Perspex windscreen
- Seating area
- Table
- Sunpad with adjustable back rests
- GRP arch with space for antennas
- 2 marine stereo speakers

Interior helm station

- Helm console with engine throttles and maneuvering joystick, full engine instrumentation, compass and cup holders
- Upholstered two-person helm bench Espresso
- Windscreen wipers with intermittent setting and washers
- Windscreen demister
- USB plugs
- Horn

Saloon

- U-shaped sofa seating
- Varnished table on stainless steel base
- Sofa
- Storage cabinet / TV stand to starboard
- Side window pleated blinds
- Handrails with handstitched Foglizzo leather wrap
- Flooring through maindeck Fortezza
- Radio / CD / MP3 with Bluetooth in saloon
- 2 stereo speakers

Galley

- Stainless steel sink
- Mixing tap
- 3 -burner gas cooktop
- Corian worktop
- Fridge dual voltage (174L / 46 US Gal)
- Freezer dual voltage (16L / 4 US Gal)
- Waste bin

- Storage drawers and cupboards
- Flooring through maindeck Fortezza

Master stateroom

- Double bed (200 cm x 160 cm / 6'6" x 5'2")
- Bedside tables with storage
- Large closet with shelving
- Storage cabinet
- Vanity desk with mirror
- Panoramic side windows with blinds and opening ports
- Removable carpet set
- AC and USB plugs
- En suite bathroom
- Solid countertop and washbasin
- Soap dispenser & toothbrush holder
- Separate shower compartment
- Freshwater electric toilets
- Extractor fan
- AC plug
- Opening port

VIP stateroom

- Double bed (200 cm x 150 cm / 6'6" x 4'11") convertible into 2 single berths
- Large closet with shelving
- Large side windows with blinds and opening ports
- Overhead skylight with opening hatch with shade / insect screen
- Removable carpet set
- AC and USB plugs
- En suite bathroom
- Solid countertop and washbasin
- Soap dispenser & toothbrush holder
- Separate shower compartment
- Freshwater electric toilets
- Extractor fan
- AC plug
- Opening port

Crew accomodation - Option

- Single berth (185 cm x 70 cm / 6' x 2'3")
- Storage closet
- Separate bathroom with toilet, washbasin and shower
- Additional holding tank (50L / 13 US Gal)
- Large window on the transom with blinds
- Crew door access from cockpit

Propulsion

- Joystick system for IPS
- IPS Nibral twin props
- Electronic power steering
- Electronic engine controls and throttles at each helm
- Single Lever, Cruise Control, Trim Computer and Low
- Speed functions
- Bronze seawater strainers
- Forced air ventilation system for engine room

Electrical system

- Battery bank (12V) - Engine (220 A/h)
- Battery bank (12V) - House (460 A/h)
- Battery bank crossover switch at helm
- Tactile graphic display for battery levels, AC sources, lighting and tank levels
- Remote battery switches
- Centralized distribution and breaker boxes for AC and DC systems
- AC shore power system
- Twin battery chargers (2 x 25A - 12V)
- LED interior and exterior lighting
- AC plugs in each cabin and in the galley and saloon

Fuel system

- 2 fuel tanks (aluminium) with interconnection valves (1240L / 328 US Gal)
- Fuel fills to port and starboard with crossover valve
- Remote shut-off valves in aft cabin

Water system

- Freshwater tanks (586L / 155 US Gal)
- Hot water heater (40L / 11 US Gal)
- Freshwater pressure pump
- Grey water sump pump with automatic discharge
- Holding tank (120L / 32 US Gal)
- Holding tank vent filters
- Overboard discharge pumps for holding tanks with macerator function and deck pump-out
- Automatic bilge pumps with high water alarm (2)
- Manual bilge pump

Systems

- Fire extinguishers in engine room with manual pull handle (Novec 1230)

Construction

- Hand-laid GRP hull
- Hand-laid GRP deck with counter molding
- Isophthalic gelcoat
- Osmosis barrier

Additional standard equipment

- User and Owner's manuals
- Captain's briefcase with set of manuals

North american specifications

- Chilled water air conditioning incorporating reverse cycle heating (42 000 BTU)
- Generator with underwater silent exhaust (13,5kW)
- AGM Gel batteries bank upgrade
- Galvanic Isolator
- Cathodic bonding system with dedicated anodes