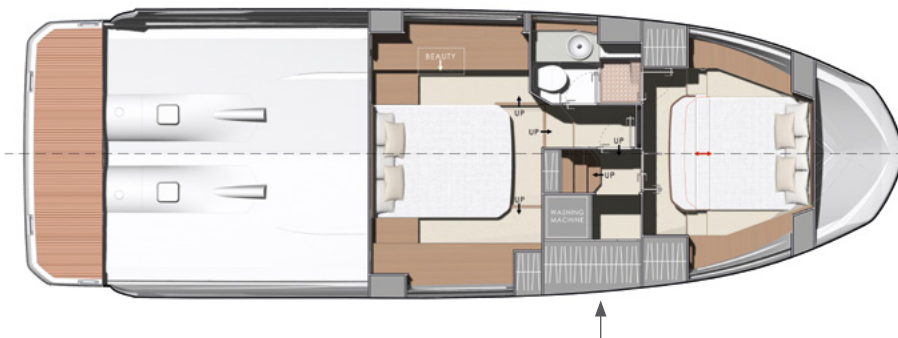
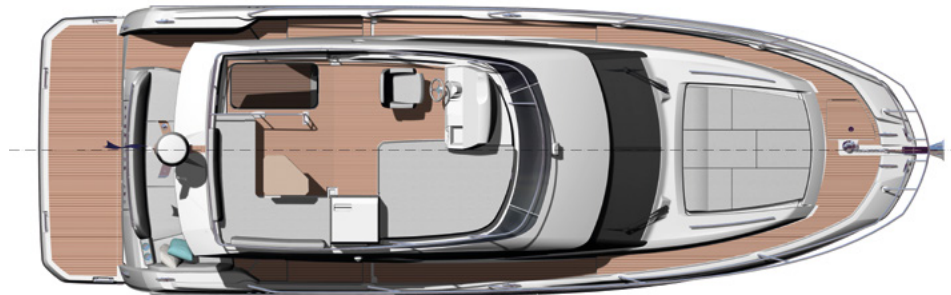


NEW | PRESTIGE 420



Overall length	42'10"	13,06 m
Overall beam	13'5"	4,1 m
Draft	3'7"	1,10 m
Light displacement	22 928 Lbs	10 400 kg
Fuel capacity	309 US gal	1 170L
Water capacity	87 US gal + 25 US gal (option)	330L + 95L (option)
Hot water heater capacity	11 US gal	40L
Accommodation	4	
Category	B - 10 / C - 12	
Engine	CUMMINS 2 x QSB 6.7 - 380 HP - V-Drive CUMMINS 2 x QSB 6.7 - 425 HP - V-Drive	



Model available with walk-in-closet or bathroom



ENGLISH / Standard equipment

Deck

- Stainless steel stem head fitting with anchor roller
- Anchor stop
- Electric windlass with wired remote in anchor locker (12V)
- Anchor locker with dedicated space for fender storage
- Stainless steel cleats (6)
- Stainless steel handrails
- Stainless steel rubrail
- Foredeck sunpad area
- Storage compartment with dual access (from cockpit and bathing platform)

Bathing platform

- Bathing platform
- Hot and cold shower
- Stainless steel bathing ladder

Cockpit

- L-shaped seating area
- Stainless steel ladder to flybridge with teak steps
- Access hatch to the engine room with gas struts
- Transom safety gate
- 2 marine stereo speakers
- Overhead LED lighting

Flybridge

- Helm console with engine throttles, compass, storage compartment
- Helm seat
- Stainless steel guard rails
- Perspex windscreen
- Seating area
- Table
- Sunpad with adjustable backrests
- 2 marine stereo speakers

Interior helm station

- Helm console with engine throttles, full engine instrumentation, compass and cup holders
- Helm seat with pivoting backrest
- Windscreen wipers with intermittent setting and washers
- Windscreen demister
- USB plugs
- Horn

Saloon

- U-shaped sofa seating
- Varnished table on stainless steel base
- Sofa
- Side window pleated blinds
- Removable carpet set
- Radio / CD / MP3 with Bluetooth in saloon
- 2 stereo speakers

Galley

- Stainless steel sink
- Mixing tap
- 2 -burner gas cooktop
- Fridge dual voltage (113L / 30 US Gal)
- Freezer dual voltage (17L / 4 US Gal)
- Waste bin
- Storage drawers and cupboards
- Wrap-around galley with cockpit bar
- Wooden flooring

Master stateroom

- Double bed (200 cm x 165 cm / 6'6" x 5'5")
- 2 reading lamps
- Bedside tables with storage
- Large closet with shelving
- Storage cabinet
- Vanity desk with mirror
- Panoramic side windows with blinds and opening ports

- Removable carpet set
- AC and USB plugs
- En suite bathroom
- Solid countertop and washbasin
- Separate shower compartment
- Freshwater electric toilets
- AC plug
- Opening port

VIP stateroom

- Double bed (200 cm x 165 cm / 6'6" x 5'5")
- 2 reading lamps
- Large closet with shelving
- Large side windows with blinds and opening ports
- Opening deck hatch with shade / insect screen
- Removable carpet set
- AC and USB plugs

Walk-in closet / Laundry room

- Located to starboard of staircase and includes storage baskets, large hanging locker and full-length mirror

Propulsion

- Twin engine V-Drive system
- Electronic engine controls and throttles at each helm
- Bronze seawater strainers
- Forced air ventilation system for engine room

Electrical system

- Battery bank (12V) - Engine (200 A/h)
- Battery bank (12V) - House (230 A/h)
- Battery bank crossover switch at helm
- Centralized distribution and breaker boxes for AC and DC systems
- AC shore power system
- Battery charger (40A - 12V)
- LED interior and exterior lighting
- AC plugs in each cabin and in the galley and saloon

Fuel system

- 2 fuel tanks (aluminum) with interconnection valves (1170L / 309 US Gal)
- Fuel fills to port and starboard
- Remote shut-off valves in aft cabin

Water system

- Freshwater tanks (330L / 87 US Gal + 95L / 25 US gal - option)
- Hot water heater (40L / 11 US Gal)
- Freshwater pressure pump
- Grey water sump pump with automatic discharge
- Holding tank (120L / 32 US Gal)
- Overboard discharge pumps for holding tanks with macerator function and deck pump-out
- Automatic bilge pumps with high water alarm (2)
- Manual bilge pump

Systems

- Fire extinguishers in engine room with manual pull handle (Novac 1230)

Construction

- Hand-laid GRP hull
- Hand-laid GRP deck with counter molding
- Isophthalic gelcoat
- Osmosis barrier

Additional standard equipment

- User and Owner's manuals
- Captain's briefcase with set of manuals

North american specifications

- Chilled water air conditioning incorporating reverse cycle heating (32 000 BTU)
- Generator with underwater silent exhaust (7,5 kW)

- AGM Gel batteries bank upgrade
- Galvanic Isolator
- Wooden flooring in main saloon