

550
550^s

PRESTIGE

LUXURY MOTOR YACHTS

PRESTIGE VIDEO



◀ **Enjoy our video** ▶

Scan the QR code with your smartphone and discover the
PRESTIGE 550 & 550S video.



PRESTIGE 550 video.



PRESTIGE 550 S video.



550 & 550^S PRESTIGE

A DISTINCTIVE BRAND.

FOR 20 YEARS, THE PRESTIGE BRAND HAS BEEN A REFERENCE IN THE WORLD OF PLEASURE CRUISING. THE BRAND WAS BORN OF A VISION: TO CREATE A COMPLETE LINE OF MOTOR YACHTS, MARRYING EXCEPTIONAL SEAWORTHINESS AND CONTEMPORARY DESIGN WITH A CONCERN FOR THE PRESERVATION OF TRADITIONAL MARITIME VALUES.

PRESTIGE : A LUXURY DIVISION.

THE PRESTIGE BRAND AIMS FOR EXCELLENCE WITH THE CREATION OF A NEW LUXURY DIVISION: PRESTIGE. THE NAME GUARANTEES A QUALITY OF SERVICE EXCLUSIVE TO THE WORLD OF LUXURY YACHTS: A NETWORK OF SPECIALISTS, RENOWNED EXPERTS, AND RIGOROUS STANDARDS FOR PREMIUM QUALITY.

PRESTIGE 550

THE NEW PRESTIGE BRAND : STRENGTH AND ELEGANCE

IN THE IMAGE OF THE PRESTIGE 500, THE NEW SIGNATURE OF THE PRESTIGE FLYBRIDGE LINE IS BASED ON TWO KEY PRINCIPLES : HARMONY IN DESIGN AND ASSURANCE OF POWER AND SAFETY.

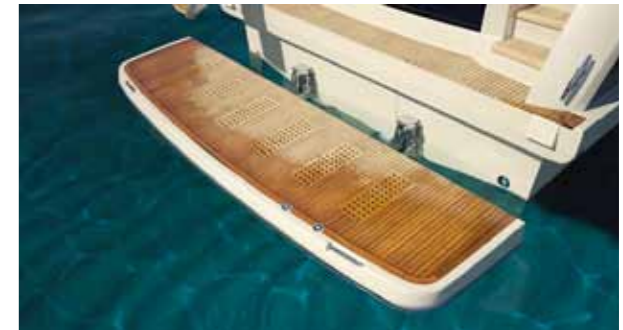
HARMONY IN DESIGN : THE ELEGANT, DISTINCTIVE DESIGN OF THIS FLYBRIDGE FEATURES AN EVEN MORE ELONGATED PROFILE AND A STRONGER PERSONALITY. ITS CONTEMPORARY INTERIOR DESIGN SHOWCASES INNOVATION IN THE CONCEPT AND LAYOUT OF LIVING SPACES, INCORPORATING CLEVER DETAILS FOR ENHANCED COMFORT AND PRODUCTS OF SKILLED CRAFTSMANSHIP FOR A TOUCH OF LUXURY.

POWER AND SAFETY : THE EXCEPTIONAL SAVOIR-FAIRE OF PRESTIGE IS EVIDENT IN THE MARRYING OF SKILLED CRAFTSMANSHIP WITH THE LATEST TECHNOLOGY IN ORDER TO OFFER THE BEST AND MOST INNOVATIVE EQUIPMENT, PARTICULARLY WITH REGARD TO ENGINE POWER, FUEL EFFICIENCY AND SAFETY ONBOARD.

PRESTIGE
LUXURY MOTOR YACHTS





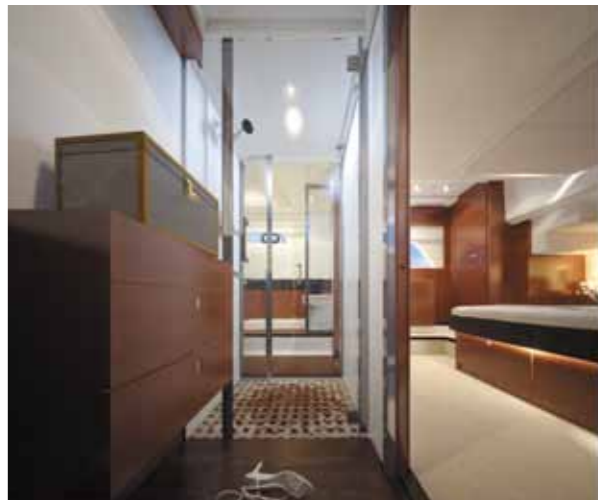




PRESTIGE®
550



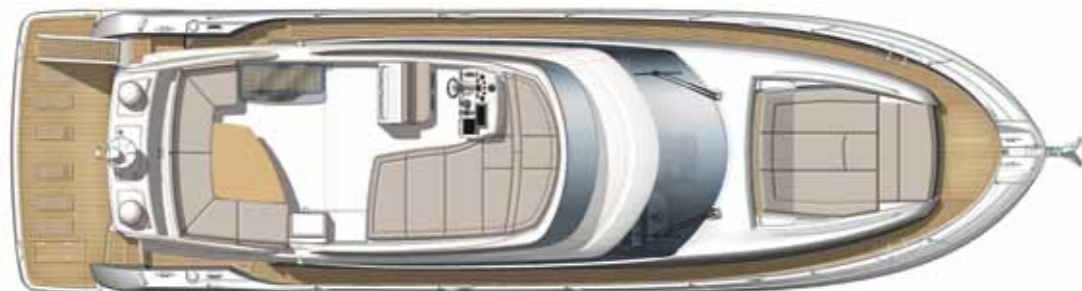
PRESTIGE®
550





PRESTIGE®
550

PRESTIGE®
550



Overall length / Longueur hors tout	17,92 m / 58'8"
Hull length / Longueur de coque	16,06 m / 52'7"
Beam / Bau maxi	4,79 m / 15'7"
Draft / Tirant d'eau	1,17 m / 3'8"
Air draft / Tirant d'air	5,90 m / 19'4"
Light Displacement / Déplacement léger	17,70 t / 39021 Lbs
Displacement Full charge / Déplacement pleine charge	24,10 t / 53131 Lbs
Deadrise angle at transom / V° de carène au tableau arrière	16°
Engine power / Puissance moteur	Cummins QSC 8.3 / 2 x 600 Cv + Zeus
Mid-load max speed / Vitesse max à mi-charge	*30 N
Cruising speed / Vitesse de croisière	*24 N
Consumption at / Consommation à 30 N	*238 L / 63 US gal

Provisional version - Version provisoire

This document is not contractual and we reserve the right to modify equipment or specification without advance notice.
Illustrations non contractuelles, nous nous réservons le droit de les modifier sans préavis.

Consumption at / Consommation à 24 N	*193 L / 51 US gal
Range at / Autonomie à 30 N	190 NM
Range at / Autonomie à 24 N	240 NM
Cabins / Cabines	3
Berths / Couchages	6
Fuel tank capacity / Capacité carburant	1930 L / 510 US gal
Water tank capacity / Capacité eau	800 L / 211 US gal
Holding tank capacity / Capacité eaux noires	120 L / 31,7 US gal
Optional generator / Groupe électrogène optionnel	11 Kw / 17,5 Kw
Optional air conditioning system / Air conditionné optionnel	Med 59.000 BTU, Trop 84.000 BTU
CE Category / Catégorie CE	B-12 / C-14 (In progress / En cours)

Architecte / Design : J & J / Garroni Design / JP Concepts / Prestige Engineering

*Estimated performance & consumption, mid-loaded boat. / Vitesses & consommations estimées, données indicatives à mi-charge.

PRESTIGE 550 S

THE COUPÉ CONCEPT REVISITED BY PRESTIGE

THE PRESTIGE 550 S EXPANDS ON THE CONCEPT OF COUPÉ MOTOR YACHTS THAT BEGAN WITH THE SUCCESSFUL PRESTIGE 500 S.

THE CONCEPT OF THE COUPÉ MOTOR YACHT REVISITED BY PRESTIGE FEATURES A LARGE LIVING SPACE DESIGNED ENTIRELY ON A SINGLE LEVEL, WITH A WIDE OPENING DOOR TO THE COCKPIT AND LARGE OPENING ROOF.

THIS CONFIGURATION IS IDEAL FOR CRUISING IN ANY LATITUDES, AND, CONTRARY TO CLASSIC EXPRESS MOTOR YACHTS, IT WILL PROVIDE THE ADDED BENEFIT OF PERFECTLY COMFORTABLE CRUISING IN ANY WEATHER CONDITIONS.

PRESTIGE
LUXURY MOTOR YACHTS



PRESTIGE®
550^S





A SPACIOUS DECK SALOON



PRESTIGE®
550^S





PRESTIGE®
550^S



PRESTIGE®
550^S



PRESTIGE®
550^S

O S

U

U



PRESTIGE® 550^S



Overall length / Longueur hors tout	17,92 m / 58'8"
Hull length / Longueur de coque	16,06 m / 52'7"
Beam / Bau maxi	4,79 m / 15'7"
Draft / Tirant d'eau	1,17 m / 3'8"
Air draft / Tirant d'air	5,55 m / 18'2"
Light Displacement / Déplacement léger	17 450 Kg / 38470 Lbs
Displacement Full charge / Déplacement pleine charge	23 640 Kg / 52117 Lbs
Deadrise angle at transom / V° de carène au tableau arrière	16°
Engine power / Puissance moteur	Cummins QSC 8.3 / 2 x 600 Cv + Zeus
Mid-load max speed / Vitesse max à mi-charge	*30 N
Cruising speed / Vitesse de croisière	*24 N
Consumption at / Consommation à 30 N	*238 L / 63 US gal

Consumption at / Consommation à 24 N	*193 L / 51 US gal
Range at / Autonomie à 30 N	*185 NM
Range at / Autonomie à 24 N	*240 NM
Cabins / Cabines	3 + Skipper
Berths / Couchages	6
Fuel tank capacity / Capacité carburant	1 930 L / 510 US gal
Water tank capacity / Capacité eau	800 L / 211 US gal
Holding tank capacity / Capacité eaux noires	120 L / 31,7 US gal
Optional generator / Groupe électrogène optionnel	11 Kw / 17,5 Kw
Optional air conditioning system / Air conditionné optionnel	Med 59.000 BTU, Trop 84.000 BTU
CE Category / Catégorie CE	B-12 / C-14 (In progress / En cours)

Provisional version - Version provisoire

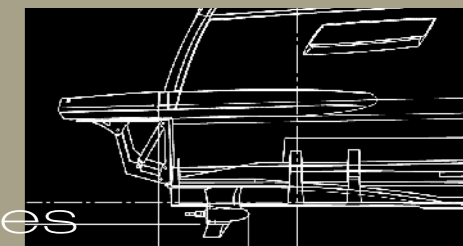
This document is not contractual and we reserve the right to modify equipment or specification without advance notice.
Illustrations non contractuelles, nous nous réservons le droit de les modifier sans préavis.

Architecte / Design : J & J / Garroni Design / JP Concepts / Prestige Engineering

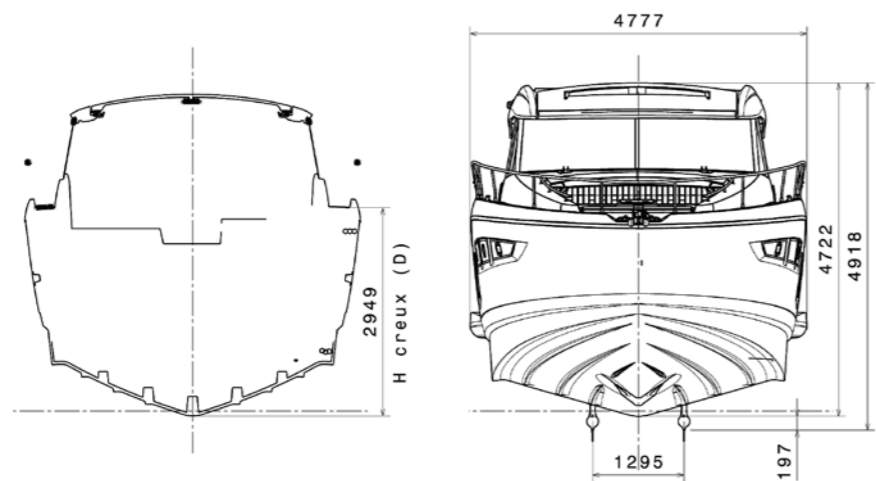
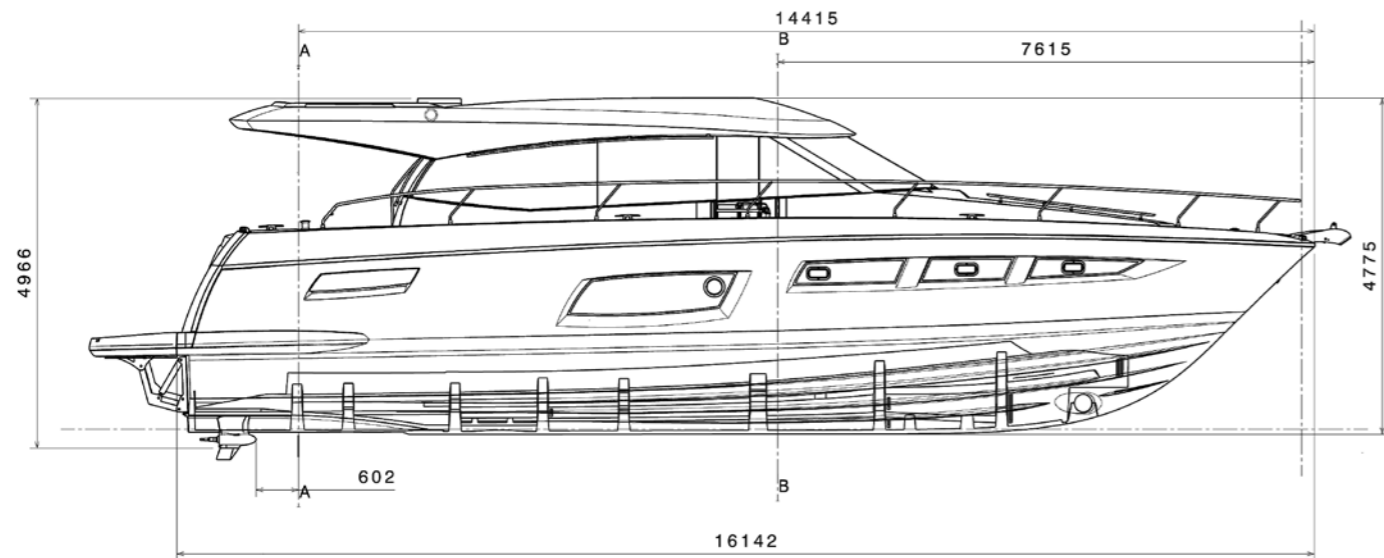
*Estimated performance & consumption, mid-loaded boat. / Vitesses & consommations estimées, données indicatives à mi-charge.

550

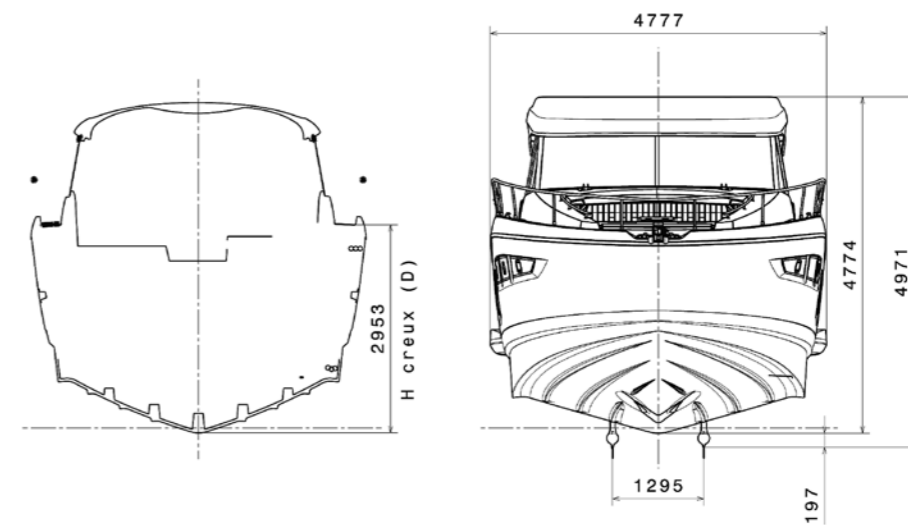
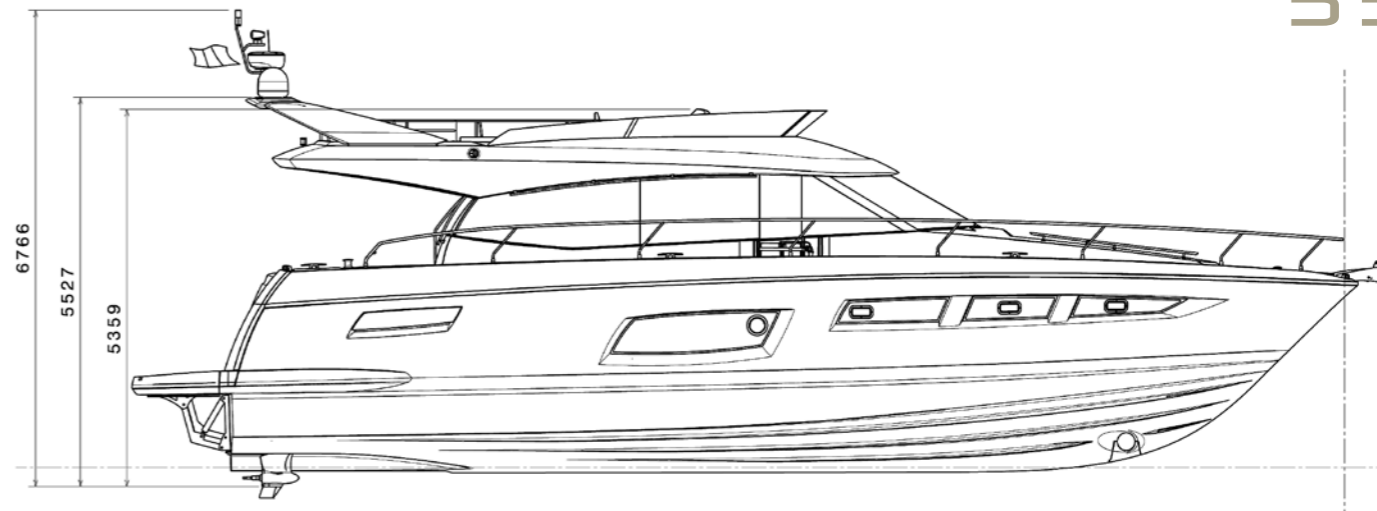
Technical Data - Données techniques



550^S



550



Quality & environment

EXCELLENCE, TECHNOLOGY AND ENVIRONMENT

PRESTIGE CONTINUES TO EVOLVE PRODUCTION TECHNIQUES TO STAY ON THE CUTTING EDGE, TO DELIVER THE BEST VALUE FOR OUR CUSTOMERS AND TO CREATE A SAFE ENVIRONMENT FOR OUR WORKERS. THE PERFECT BLEND OF TECHNOLOGY AND HUMAN SAVOIR-FAIRE PLACES PRESTIGE AT THE FOREFRONT OF YACHT DESIGN.

CATIA 3-D, THE MOST POWERFUL COMPUTER-AIDED DESIGN SOFTWARE, ALLOWS FOR INTEGRATED DEVELOPMENT OF THE MANY PARTS THAT MAKE UP A BOAT, FROM THE CONCEPT PHASE, TO PRODUCTION AND MARKETING, TO SPARE PARTS. AT PRESTIGE, THE TRIPLE-AXIS DIGITAL WOOD CUTTING MACHINES AND ROBOTIC UV-VARNISHING LINE PRODUCE PER DAY OVER 10,000 FINISHED WOOD PARTS, HOWEVER THE SIGNATURE WOODWORK AT PRESTIGE IS THE RESULT OF THE SEAMLESS MARRIAGE OF CRAFTSMEN AND TECHNOLOGY. ROBOTIC CUTTING AND DRILLING IS NOW USED ON DECKS TO FULLY PREPARE THEM FOR THE PRODUCTION LINE. THESE ROBOTS SAVE HOURS OF DIFFICULT WORK, ELIMINATE RISK TO PERSONNEL AND IMPROVE QUALITY.

THE PRISMA PROCESS, DEVELOPED BY PRESTIGE, IS A UNIQUE METHOD OF MANUFACTURING HIGH QUALITY COMPOSITE PIECES BY INJECTION MOULDING, IN WHICH THE RESIN IS INJECTED IN OPTIMUM QUANTITY AND MONITORED CONDITIONS, INCREASING THE STRENGTH AND REDUCING THE WEIGHT OF THE PIECES, AS WELL AS EMISSIONS INTO THE AIR.

THE MARINE ENVIRONMENT IS ONE OF THE MOST FRAGILE ECOSYSTEMS ON OUR PLANET. PRESTIGE WAS AMONG THE FIRST SHIPYARDS TO GET THE ISO 9001 AND THE ISO 14001 ENVIRONMENTAL CERTIFICATIONS AND WORKS CONSTANTLY TO MEET THE ENVIRONMENTAL CHALLENGE. EACH PRESTIGE BOAT INTEGRATES EQUIPMENT THAT HELPS TO PROTECT AND PRESERVE THE NATURAL ENVIRONMENT.

HERITAGE

PRESTIGE WAS FIRST DEVELOPED BY JEANNEAU, WORLDWIDE LEADER IN THE CONSTRUCTION OF SAILBOATS AND POWERBOATS. FOR 20 YEARS, PRESTIGE HAS GROWN ON THE FOUNDATIONS OF OUR ORIGINAL CORE VALUES, BUILDING TIMELESS, ELEGANT AND SEAWORTHY MOTOR YACHTS THAT BLEND TECHNOLOGY, COMFORT AND INNOVATIVE DESIGN. TODAY, OVER TWO THOUSAND PRESTIGE BOATS HAVE BEEN DELIVERED AND ARE CRUISING THE WORLD'S SEAS.

PRESTIGE

550 & 550^S

Power - Motorisation



THE POWER OF TWO LEGENDARY NAMES IN MARINE PROPULSION

CUMMINS INCORPORATED + MERCURY MARINE



DIESEL ADVANTAGES

- Outstanding fuel economy and range
- Higher torque for greater power
- Durability for longer engine life

QUANTUM ADVANTAGES

- Instant startup in cold weather
- Virtually smoke and odor free
- Lighter weight / increased power
- Simplified engine information management
- 80% less noise at idle on QSB Series
- SmartCraft® vessel integration
- Unmatched durability
- EPA Tier 2, IMO and RCD certified

ENGINEERING EXPERTISE + GLOBAL NETWORK



Cummins Inc. is recognized worldwide as a leader in advanced diesel power systems. Its success in the marine market includes over 80 years of experience producing reliable propulsion and auxiliary engines for recreational and commercial applications.

Since the company was founded in 1939, Mercury Marine has continually set the standard as the world's most innovative technological leader in marine propulsion and has consistently emphasized performance and innovation. That pledge remains strong today, as Mercury is repeatedly recognized for its ability to foresee and fulfill the needs of its consumers.

Cummins MerCruiser Diesel, a joint venture between these two industry leaders, represents a combination of world-class research and engineering expertise, exceptional range of products and an ever-growing global service network. Through this alliance, CMD has emerged as the industry's premier choice for vessel integration performance.

UNSURPASSED RELIABILITY & EFFICIENCY



Today's boat operators demand a higher level of performance from all aspects of their vessels. Advances in boatbuilding materials and techniques, improvements in vessel design, comfort and safety, and significant developments in marine electronics have raised expectations across the board.

The CMD Quantum Series engines meet this challenge by delivering a level of performance and reliability that sets a completely new standard for marine diesel propulsion. The result of decades of research and cutting-edge innovations, Quantum engines feature specialized high-pressure common rail or electronic injection fuel systems that provide increased power-to-weight ratios, cleaner starts and less noise. The smoke and odor often associated with diesel engines are all but eliminated. With quiet, effortless startups and impressive acceleration, these engines contribute to a superior boating experience.



UNSURPASSED FOR RELIABILITY AND DURABILITY, CUMMINS MerCRUISER DIESEL HAS INCREASED THE WARRANTY PERIOD FOR THE QUANTUM SERIES TO GIVE YOU EVEN GREATER PEACE OF MIND.



INNOVATIVE SYNERGY

TO ENSURE MAXIMUM PERFORMANCE, ALL QUANTUM SERIES ENGINES ARE SMARTCRAFT® CAPABLE. MULTIPLEXING DIGITAL CONTROL AND COMMUNICATIONS SYSTEMS CONSTANTLY MONITOR NOT ONLY ENGINE PERFORMANCE BUT ALSO FUEL TANK LEVELS, GPS AND WATER DEPTH. WITH A COLOR HELM DISPLAY THAT PROVIDES INSTANT DIAGNOSTICS AND IS EASY TO READ, YOU'LL ALWAYS BE IN COMMAND OF YOUR VESSEL. QUANTUM ENGINES ALSO FEATURE ADVANCED PISTON DESIGN FOR DURABILITY. FRONT ENGINE SUPPORTS HAVE BEEN STRENGTHENED AND DESIGNED FOR EASIER INSTALLATION. A RAISED TURBOCHARGER LOCATION REDUCES EXHAUST CONNECTION COMPLEXITY. HANDED FUEL AND LUBE FILTERS CAN BE INSTALLED ON EITHER SIDE OF THE ENGINE FOR EASY SERVICING. ADD A CORROSION-PROOF BELT GUARD, AND YOU CAN BEGIN TO UNDERSTAND THE LEVEL OF DETAILED PLANNING THAT GOES INTO OUR PRODUCTS AND THE RESULTING CONFIDENCE YOU CAN HAVE IN THEM. IN ADDITION TO SETTING THE BENCHMARK FOR PERFORMANCE, CUMMINS MerCRUISER DIESEL IS ALSO A LEADER IN ENVIRONMENTAL PROTECTION, EARNING ONE OF THE FIRST EPA TIER 2 AND IMO EMISSION STANDARDS CERTIFICATIONS. FIELD-TESTED FOR THOUSANDS OF HOURS IN A VARIETY OF BOATS AND IN ALL TYPES OF ENVIRONMENTS, OUR FULL-AUTHORITY ELECTRONIC CONTROL SYSTEM CONTINUALLY MONITORS OPERATING CONDITIONS AND ADJUSTS TO PROVIDE OPTIMIZED PERFORMANCE.

Building on the synergy of the Cummins and Mercury Marine joint venture and drawing from a worldwide network of technology partnerships, there is simply no other company that possesses the resources and unyielding commitment to innovation as Cummins MerCruiser Diesel.

The most recent example of CMD's innovative leadership is the highly acclaimed Zeus® Pod Propulsion System featuring joystick docking and Skyhook® station keeping. The result of more than a decade of research and collaboration, CMD has produced what is being called the world's most advanced marine propulsion system.



VESSEL INTEGRATION & INFORMATION MANAGEMENT

THE INDUSTRY-LEADING VESSEL INFORMATION TECHNOLOGY JUST GOT BETTER! THE NEXT GENERATION OF SMARTCRAFT® IS AVAILABLE ACROSS CMD'S POD, INBOARD AND STERNDRIVE ENGINES AND OFFERS THE MAXIMUM AMOUNT OF VESSEL CONTROL AND INFORMATION MANAGEMENT IN THE MARKETPLACE, RESULTING IN THE ULTIMATE OUTCOME OF INTUITIVE BOATING.

ESTIMATED RANGE, FUEL CONSUMPTION, MAINTENANCE UPDATES AND ENGINE TEMPERATURE ARE ALL AT YOUR FINGERTIPS WITH THE ADVANCED SMARTCRAFT SYSTEM.

BY CONSTANTLY MONITORING AND INTEGRATING THE WEALTH OF INFORMATION YOUR VESSEL CAN PROVIDE, SMARTCRAFT ALLOWS YOU TO FULLY MAXIMIZE EVERY ASPECT OF YOUR VESSEL'S PERFORMANCE!



SMARTCRAFT® LETS YOU...



- Invest in a system that is adaptable so you don't have to replace it when future enhancements are available.
- Know when something is going wrong and how to respond.
- Feel confident that you have a system that is proven and reliable and won't leave you stranded.
- Know how far you can cruise with the fuel you have on board.
- Have one simple integrated system so you don't have to learn and monitor multiple systems.
- Have instant access to the information on the performance of your vessel.

SMARTCRAFT® MEANS INTEGRATED...

Features

Intuitive functions simplify operator interaction and increases operator's level of control with auto sync, cruise control, throttle only, and single lever control.

Control

SmartCraft control coordinates motion control with throttle and gear and trolling valve.

Redundancy

SmartCraft systems provide redundancy to protect the operator against single-point failures to get the vessel home, including electrical isolation and backup of motion control commands.

Protection

SmartCraft instantly notifies the operator of problems – if they arise – and coordinates features and controls to anticipate the needs of the vessel's operation, reducing the workload on the operator.

Sensors

SmartCraft sensors provide continual and reliable knowledge of how the vessel is operating including tank levels, steering, speed and more.

Information

Constant access to critical data such as engine and transmission information, fuel management and trip summaries allows the operator to make decisions easily and enjoy the ride!

- Smart Start/Stop prevents accidental starter activation
- Vessel Integration Panel (VIP) allows ease of service
- Circuit protection from resettable breakers eliminates the need for fuses
- Engine room start/stop (available with QSB, QSC, QSL, QSM) allows starting and stopping of engine
- Expandable architecture gives the customer a "plug and play" design amounting to a personalized helm
- SmartCraft gives you fingertip access to vessel system information (generation, water and fuel tanks, air conditioner and more), allowing a true connection to your vessel.



VESSEL CONTROL

AT CUMMINS MERCRUISER DIESEL, OUR GOAL IS TO MAKE YOUR BOATING LIFE SIMPLE, EASY AND ENJOYABLE. WE ACHIEVE THIS THROUGH DEVELOPING HIGHLY RELIABLE AND INNOVATIVE ENGINES AND THEN PAIRING THEM WITH SUPERIOR ELECTRONIC ENGINE CONTROLS SUCH AS OUR DIGITAL THROTTLE & SHIFT (DTS).

REDUCING THE DIFFICULTY OF BOATING THROUGH EFFORTLESS DIGITAL THROTTLE & SHIFT

Single- or dual-engine applications

The DTS system may be used in applications with either one or two engines; no additional control boxes or vessel wiring required.

Single-Lever Control

Single-lever control permits gear and throttle control using a single lever. The DTS system protects the engines and transmissions during shifting.

Two-Button Station Transfer

A "TRANSFER" button is provided on the control head to allow the boat operator to take control at a different helm station. The DTS control system has a "two-button" press process. One button press starts the transfer. If the handles at the station taking control are in an appropriate position, a second button press completes the station transfer process.

Multiple Station Capability

Multiple station capability available with QSD, QSB, QSC, QSL and QSM engines with electric shift transmissions.

Gear Lockout

A dedicated "Throttle Only" button is provided on the control head to lock the gear in the neutral position so that the engine can be "warmed up" at the dock. An indicating light provides positive feedback to the boat operator that the engine may be safely throttled up in neutral while at the dock.

Automatic Engine Synchronization

At key "ON," the system default is for auto sync to be on. As long as the levers' positions are close, the DTS system will control the port engine speed to match the starboard. If the operator desires to run engines out of sync, a button is provided to turn sync off.

Gear Position Indicating Lights

The control head includes an indicator light for each engine to let the operator know when the transmissions are in the neutral position.

Easy Installation

DTS control is integrated as part of the base SmartCraft system and has been engineered for easy installation. DTS architecture incorporates redundancy for peace of mind.

Dock Mode

The DTS system in dock mode increases throttle resolution for docking. It makes the lever input less sensitive, allowing the operator to have better engine rpm control during clo-quarter maneuvers.

Troll Mode

Integrated support for trolling valves (troll-capable). The troll feature allows you to slow the vessel down. This application is ideal for fishing vessels, as it gives the ability to precisely control the speed. It also allows the vessel speed to be reduced easily to enter a no wake zone.

ZEUS®

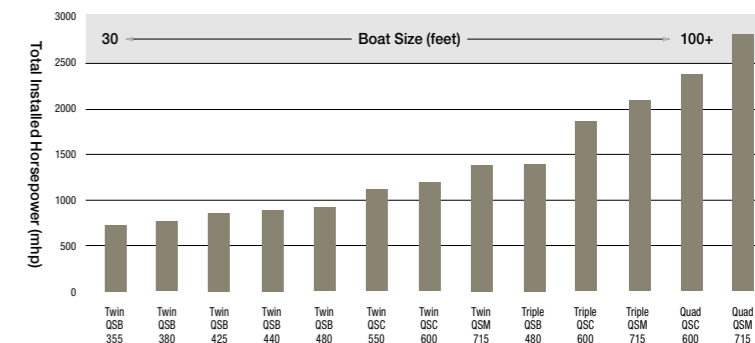
PROVIDING IMPROVED FUEL ECONOMY, FASTER CRUISE SPEED, AND FASTER TOP SPEED, ZEUS POD DRIVES GIVE YOU THE PROTECTION, MANEUVERABILITY AND PERFORMANCE EVERY BOATER NEEDS.



Docking Without Fear

Never again worry about wind and current when you approach the dock. Our advanced joystick control system is incredibly intuitive and can be operated with a simple turn of the wrist. One hand controls it all, from sideways tracking, to spinning on a dime, to precise speed control. Whether at the dock or backing down on a blue marlin, the total authority and maneuverability is simply unmatched.

13 ZEUS POWER NODES TO FIT YOUR LIFE ON THE WATER



AN UNPARALLELED LEVEL OF PROTECTION, PERFORMANCE

Designed for PROTECTION

If the pod drive strikes debris, the rear-facing propellers are protected by the pod gearcase and skeg. Additionally, by mounting the pod drive in a tunnel, the torpedo on the drive is the same depth as the keel. Most floating objects will be deflected downward by the keel and skeg, away from the propellers. Should the unit come into contact with a substantial object, the skeg is designed to shear below the torpedo, minimizing damage to the drive and costly repair bills. By designing a rear-facing pod drive mounted in a tunnel, we offer maneuverability and efficiency improvement, without sacrificing protection.



Clean, Quiet & Comfortable

Because CMD Zeus Pods utilize counter-rotating propellers and are mounted on large rubber grommets, gear noise and vibration are significantly reduced for a quiet and comfortable ride. With a foundation of quiet and clean-running Quantum engines, already-low engine exhaust is nearly eliminated by venting exhaust gases through the propeller hubs where the water flow leaves it in your wake.

For more information on CMD's superior electronic engine controls, please visit our website: www.cmdmarine.com

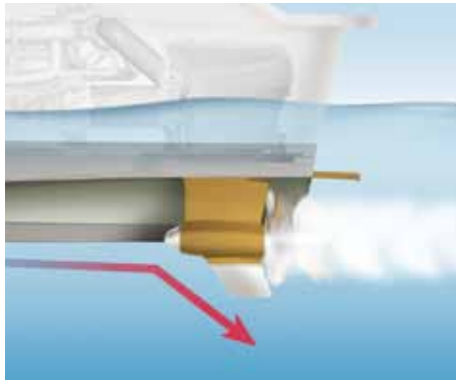


ENHANCED MANEUVERABILITY

Get performance more like a luxury sports car than the typical yacht. Each pod turns independently, resulting in much greater turning efficiency and responsiveness.

Reliable, responsive hydraulic power steers the pods and actuates the integrated trim tabs. Trim tabs are automated to improve visibility during acceleration and optimize performance and fuel economy at all speeds. The rear-facing pod with through-hub exhaust facilitates a very tight turning radius. Counter-rotating propellers eliminate lateral forces, giving completely straight tracking. At the helm, a self-centering wheel, customizable steering response, and a tilt wheel give a whole new meaning to the word cruise.

& EASE OF USE



SKYHOOK® STATION KEEPING

Envision having the ability to pull up to a busy fuel dock and wait in line without having to constantly tend to your controls to stay in place, or imagine fishing a jetty by yourself without ever stepping to the helm.

With the touch of a button, the Skyhook feature maintains your vessel's position and heading, even in strong currents and windy conditions.

Zeus features:

Maneuverability/Ease of Use

- Intuitive joystick system with proportional thrust provides easy, stress-free docking experience, even in wind and current.
- Skyhook holds boat position and heading, perfect for waiting for a bridge opening, or hovering over a prime fishing spot
- Advanced Autopilot is integrated, and it provides both autoheading and waypoint tracking
- Automated, integrated trim tabs, when activated, constantly self adjust to provide the optimum running attitude at all speeds, relieving the captain of tedious manual adjustment. They also reduce time to plane and improve the captain's vision over the bow during acceleration

Performance/Efficiency

- Zeus technology results in improved fuel economy, faster cruise speed and higher top speed compared to inboard propulsion
- Trim tabs automatically adjust to provide the most efficient running angle, no matter what speed the boat is traveling
- Twin counter-rotating propellers and hydrodynamic gearcase design apply thrust horizontally – not on a downward angle – make CMD Zeus inherently more efficient than a conventional shaft-driven system

Protection

- Robust, tunnel-mounted pods with rear-facing stainless steel propellers for industry-leading defense against damage from debris and grounding
- Shearable skeg designed to break free on mild to moderate strikes, minimizing harm to the pod
- Pod designed to break away – without compromising watertight integrity – in the event of a major collision or hard grounding that might otherwise result in hull damage
- Covered by CMD's exclusive Marine Repair Logistics service



Hull No. 1

CMD INTEGRATION SERVICES IS OBSESSED WITH MAKING THE FIRST INTEGRATION OF A GIVEN CMD PROPULSION PACKAGE INTO A PARTICULAR BOAT MODEL AS FLAWLESS AS HUMANLY POSSIBLE. THE CMDIS TEAM RELENTLESSLY AND CONTINUOUSLY EVALUATES EVERY ASPECT OF A PROJECT FROM START TO FINISH, MAKING SURE THAT BOATBUILDER GETS BACK THE BEST POSSIBLE MARRIAGE OF PROPULSION AND VESSEL.

CMD INTEGRATION SERVICES

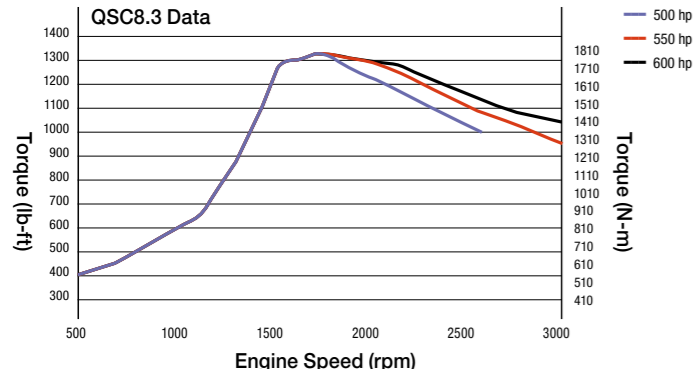
CMD CREATED ITS INTEGRATION SERVICES GROUP TO FILL A VOID IT SAW IN THE MARINE INDUSTRY. TODAY'S ELECTRONIC DIESEL ENGINE IS JUST A PART OF A COMPLEX PROPULSION SYSTEM THAT MAY INCLUDE SUCH THINGS AS DIGITAL THROTTLE AND SHIFT, MULTIPLE SMARTCRAFT DISPLAYS, MULTIPLE HELMS, PODS, STERNDRIVES AND JOYSTICKS.

TO HELP OUR BOATBUILDER PARTNERS SEAMLESSLY INTEGRATE OUR PRODUCTS INTO THEIR VESSELS AND ENSURE THAT EVERYTHING WORKS JUST AS CMD AND THE BOATBUILDER ENVISIONED, WE PUT TOGETHER A TEAM OF EXPERTS. THE TEAM INCLUDES NAVAL ARCHITECTURE RESOURCES, BOATBUILDING EXPERTISE, MECHANICAL AND ELECTRONIC TECHNICIANS, APPLICATIONS ENGINEERS AND A DIRECT CONNECTION TO THE RESPECTIVE PRODUCT MANAGERS AT CMD HEADQUARTERS.

WHILE BASED AT A HAUL-OUT READY WATERFRONT MARINA FACILITY JUST MINUTES FROM CMD'S HEADQUARTERS IN CHARLESTON, S.C., THE INTEGRATION SERVICES TEAM CAN AND DOES TRAVEL VIRTUALLY EVERYWHERE QUALITY BOATS ARE MANUFACTURED. WHETHER WORKING OUT OF ITS HOME SHOP, OR AT BOAT PLANT HALF A WORLD AWAY, CMD INTEGRATION SERVICES CAN PROVIDE AS LITTLE OR AS MUCH HELP AS THE BUILDER DESIRES, AND CAN TRAIN THE BOATBUILDER'S OWN TECHNICIANS IN THE PROCESS. ALL WORK IS FULLY DOCUMENTED DOWN TO THE SMALLEST DETAIL, INCLUDING OEM BILLOF- MATERIAL, DRAWING AND SCHEMATIC EDITS, AND PROPULSION SYSTEM PREPARATION AND INSTALLATION INSTRUCTIONS, AND ALL OF THAT INFORMATION IS PROVIDED TO THE CUSTOMER FOR USE ON FUTURE INSTALLATIONS.



Specifications



QSC8.3 Litres 500-600 mhp

QSC8.3 Features

- EPA Tier 2, IMO and RCD certified
- SmartCraft® enabled
- Gallery cooled pistons for long life
- Common-rail fuel system
- Easily accessed filters and maintenance items
- Corrosion-proof belt guard
- 24-valve cylinder head for better acceleration
- Stainless steel sea water piping provides outstanding corrosion resistance

Clean, Quiet Operation

Refining the benefits of common-rail fuel systems further allows the QSC8.3 to reduce white smoke levels at startup without the aid of air heaters. The QSC8.3 is quiet at idle and virtually smoke free.

Advanced Engineering

Through thousands of hours of testing and research CMD has developed and refined engines containing elements that fulfill customers' expectations for long engine life. Stainless steel piping improves the durability of the seawater cooling circuit. A new polymer belt guard eliminates corrosion. Inboard fuel and lube filters can be installed on either side of the engine for easy servicing.

Gear Model	Ratios
Twin Disc MG 5075 A	1.77:1 / 2.05:1
ZF 280 IV	1.56:1 / 2.06:1
ZF 280-1 A	1.76:1 / 2.0:1 / 1.962:1 / 1.483:1
Twin Disc MG 5065 A	1.77:1 / 2.04:1 / 2.43:1
ZF 286A	1.48:1 / 1.75:1 / 1.96:1 / 2.21:1 / 2.39:1
ZF 286-1V	2.01:1 / 1.815:1 / 1.535:1 / 2.32:1
ZF 305A	1.75:1

QSC8.3 (500, 550, 600 metric horsepower)	
Displacement litres (cu. in.)	8.3 (505)
Cylinders	Inline-6
Fuel System	Common Rail
Cabin Heat / Block Heat	Optional
Closed Crankcase Ventilation	Optional
Volts / Amps / Isolated	12 or 24 Volt / 70-160 Amps / Optional
Corrosion Protection	Zinc Anodes / E-coating / Polymer belt guard / Stainless steel sea water tubes / Two-part epoxy paint process
Air Handling	Turbocharged / Aftercooled / Wastegated
Propulsion Options	Inboard / Zeus Pod (550, 600 hp)

PRESTIGE

550 & 550^S

Space & Luxury : Live large



wood & leather :

for a sophisticated interior

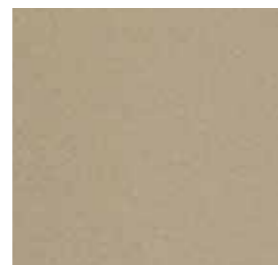
PRESTIGE®
550^S
550



AWNINGS AND SEATING COLOURS



▲ SUNBRELLA TAUPE



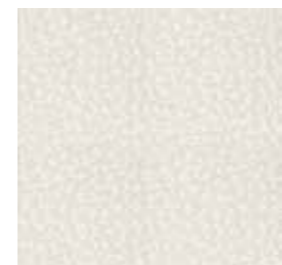
▲ CUDDY TAUPE

WOOD COLOUR

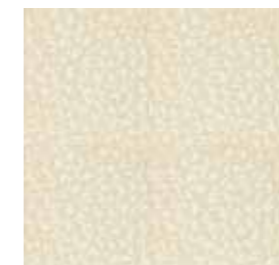


▲ Moalpi

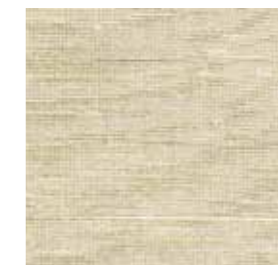
PRESTIGE RANGE SAMPLE FABRICS



▲ MEDITERRANEO
LIGHT TAN



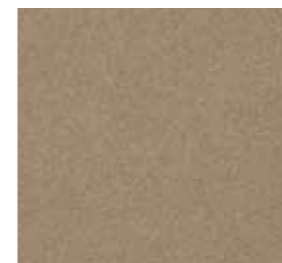
▲ CUIR BEIGE CLAIR



▲ LUXE IVORY



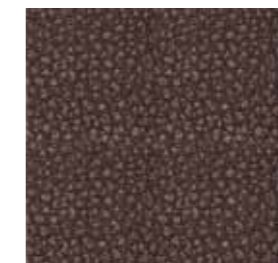
▲ METROM ECRU



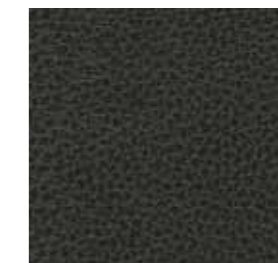
▲ ALCANTARA DOVE GREY



▲ PVC METEOR



▲ CUIR CHOCO



▲ SKIN COFFEE

The pictures is for illustration purposes only.

PRESTIGE
550
550^S

PRESTIGE®

LUXURY MOTOR YACHTS

www.prestige-yachts.com

Prestige - B.P. 529 - 85505 Les Herbiers cedex - France - info@prestige-yachts.com